

15th February Newsletter



01244 323890



admin@hooleprimary.cheshire.sch.uk



www.hooleprimary.co.uk



@hoolecofe



@hooleprimary

Message from Headteacher

It has been a busy half-term. We finish today, Thursday 15th February, until Monday 26th February for the half-term break.

Mrs Kelly, class teacher of 3WK, leaves us today to begin her maternity leave. We send our best wishes to Mr and Mrs Kelly and look forward to hearing news of their baby's arrival soon. Mrs Walsh is looking forward to teaching Team 3WK full time after the half-term break.

As ever, thank you to all of our families for your support over the last term.

Slam Dunk!

The winners of this half-term's Slam Dunk Attendance Competition were announced on Monday. Congratulations to Team 6R who came first place!

2nd place was awarded to Team 4K and 3rd place to Team 3U.

We are planning a new competition for next half-term. Look out for information regarding the Hoole Regatta, starting Monday 26th February.

Pupil Forums

We are keen to set up Parent Forums in school. Parent Forums are groups of parents who represent elements of our school population, working in collaboration with teachers and governors, including parent governors.

Currently, we have a Parent Forum for parents of children with additional needs.

We are keen to set up Parent Forums for parents/carers of children

- with English as an additional language, parents/carers from ethnic minorities and
- parents/carers of children who are eligible for free school meals.

We aim that each parent Forum will meet every term for an informal meeting. During this meeting, we will discuss issues and ideas relevant to the Forum.

if you would like to find out more about joining a Parent Forum, please register your interest by emailing admin@hooleprimary.cheshire.sch.uk and stating which forum you would like to join.





Last week, Sonny had the opportunity to go to Madrid with Connah's Quay Nomads Football Team. he trained and played against several academy teams. At the end of the tournament, he was awarded the Parents' Player trophy!



Scarlet fever

Signs & symptoms



The symptoms of scarlet fever are non-specific in early illness and may include;

- sore throat,
- headache,
- high temperature,
- nausea and vomiting.

After 12 to 48 hours the characteristic red, generalised pinhead rash develops, typically first appearing on the chest and stomach, rapidly spreading to other parts of the body, giving the skin a sandpaper-like texture.

Anyone who thinks they or a child may have it should contact a GP for a proper diagnosis and appropriate treatment.

Competition Winners

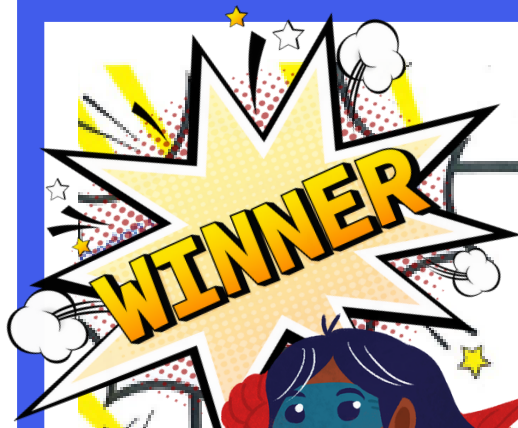


This week we celebrated the winners of our most recent Junior Safety competition.

Azra and Caleb ran a competition on the importance of booster seats and wearing a seatbelt.

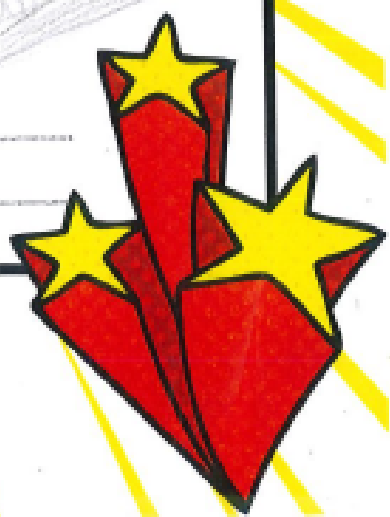
Winners were
Isabel, Fabian, Harriet . Connie , Maddie and Jac.

Watch out for the next competition in March!



What does your Hero say to help you with your attendance?

Don't be late!!



Name

Lena

Class:

4K.

Your hero's name:



**WORLD
BOOK
DAY**

JOIN OUR VOCABULARY PARADE AND DRESS UP AS YOUR FAVOURITE WORD!

FRIDAY 8TH MARCH



Letting Their Light Shine

We have lots to celebrate this week!

Jayden has completed his Stage 4 Swimming!

Elliot received a medal for being Football Player of the Week!

Harry plays for Future Stars and competed in a match against Liverpool last week, winning 2 games!

Lucas wowed his coaches by doing an Eskimo roll in his kayak!

Sonny has been on a tour of Madrid and competing in some academy football matches. He was awarded the Parents' Player trophy!

Rae achieved her love of books badge from Rainbows!

Liberty and Faith ran 1K and won these amazing medals!

Ziggy completed his Ready, Set, Read Winter Mini-Challenge!

Well done everyone!





**COMIC
RELIEF**

Non-uniform Day Friday 15th March

Children are invited to wear their own clothes in return for a donation to Comic Relief. Please make a donation via the School Gateway if you can.

We are supporting Comic Relief on Friday 15th March, raising funds for families less fortunate than ourselves. Children are invited to wear their own clothes and we are asking families to donate if they can.

Birthdays



*Aurora, Joshua,
Albert, Theo,
Sophia, Freya, Pepe,
Jaxon, George, Theo,
Kitty, Jacob, Oliver
and Max!*



*Many happy returns
to all our birthday
buddies!*

*We hope you enjoy
your birthday book!*



Key Dates

16th February	INSET Day (school closed to pupils)
19-25th February	Half-term Holidays
26th February	School re-opens
1st March	Digital Wizard Club starts
5th March	Reception Vision and Hearing Tests
6th March	House of Hoole Meeting 8.30am
6th March	Y2 Showcase at All Saints' Church (1.45pm)
7th March	Year 4 Roman Trip
8th March	World Book Day
11-15th March	Science Week
13th March	Y6 Showcase at All Saints' Church (1.45pm)
20th March	House of Hoole Meeting 8.30am



AGES:
5-11y/o
GIRLS

WILDCATS GIRLS FOOTBALL

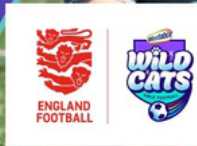
The fun way for girls ages 5-11 to get involved in football, meet new friends, build confidence and get active!

🕒 Wednesdays 5pm - 6pm (term time only)

📍 King George V Sports Hub, Blacon
CH1 5BD

£3 per session
Please note advance booking is essential for these sessions

EMAIL: community@chesterfc.com
PHONE: 01244 560580 / 07308 477055



AGES
Children in Reception,
Year 1 &
Year 2

CHESTER FC MINI KICKERS

Fun football sessions for children aged 3-7 designed to develop core skills and fundamental movements.

🕒 Saturdays 9:30am - 10:30am (term time only)

📍 Goals Soccer Centre, Talbot Way
CH1 4LT

£4 per week
Please note advance booking is essential for these sessions

EMAIL: community@chesterfc.com
PHONE: 01244 560580 / 07308 477055



AGES
7-15

CHESTER FC GOALKEEPING ACADEMY

Specialist group coaching sessions for young keepers of all abilities and experience levels.

🕒 Wednesdays 5pm - 6pm

📍 King George V Sports Hub, Blacon
CH1 5BD

£4 per session
Please note advance booking is essential for these sessions

EMAIL: community@chesterfc.com
PHONE: 01244 560580 / 07308 477055



AGES:
7-15

JUNIOR PAN DISABILITY FOOTBALL

Fun, inclusive football coaching for young people aged 7-15 with a sensory, learning or physical disability.

🕒 Tuesdays 5pm - 6pm

📍 Goals Soccer Centre, Talbot Way CH1 4LT

£4 per session
Please note advance booking is essential for these sessions

EMAIL: community@chesterfc.com
PHONE: 01244 560580 / 07308 477055



GIRLS PLAYER DEVELOPMENT CENTRE

AGES:
8-16

Supporting young female players to reach their potential with quality coaching in a fun, development-focused environment.

🕒 Fridays 5pm - 8pm

📍 King George V Sports Hub, Blacon
CH1 5BD

£5 per week
Please note advance booking is essential for these sessions



Welcoming Space

Hoole Community Centre

Westminster Road, Hoole

Hobson's Cafe is opening on a Monday evening 5-8pm to offer a warm, friendly space for families with children.

All families are welcome, tea and coffee is provided and a free meal for those who are struggling with the current cost of living crisis and for those families in temporary accommodation. A reduced regular menu is also available.

The cafe has lots of games and puzzles available, so families can have a nice evening in a warm and friendly space.

Starting Monday 4th March 5-8pm
open every Monday apart from bank
holidays.

for more information please call - 01244 342 741
email - admin@hoolecommunitycentre.org.uk